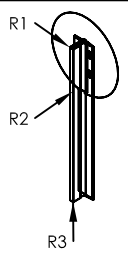
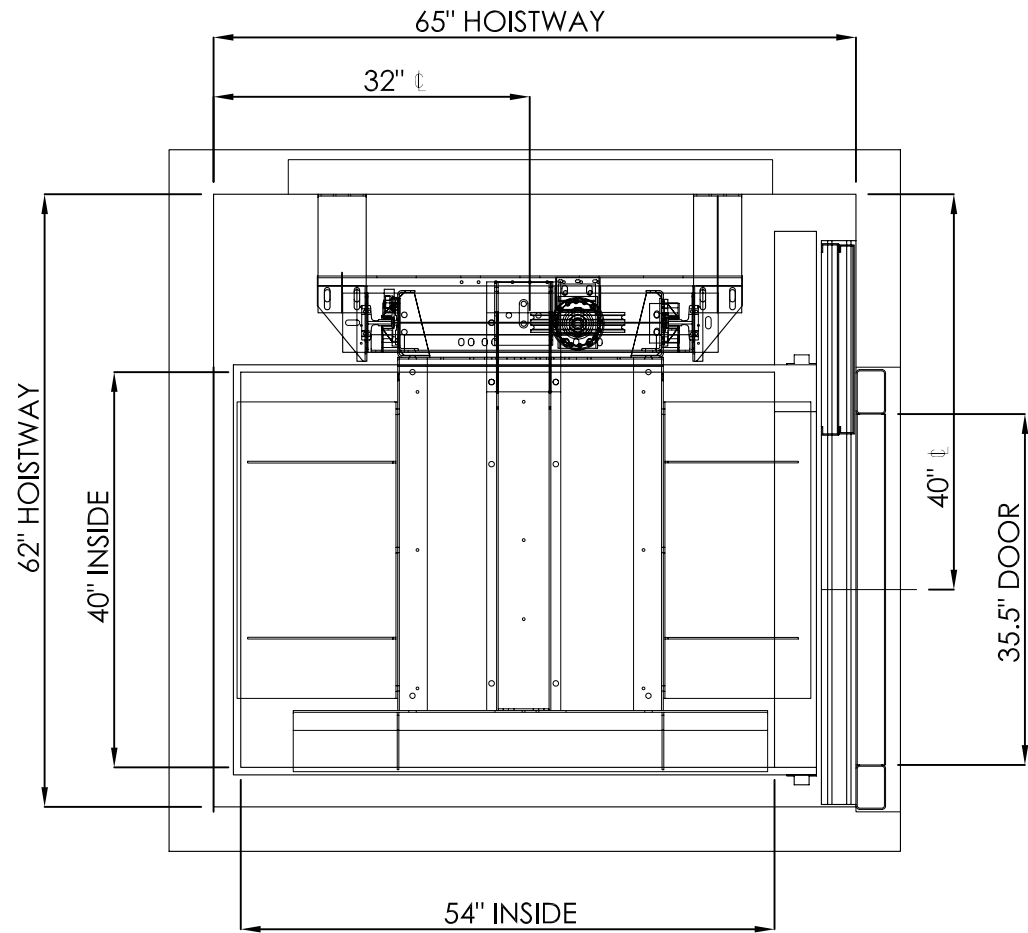
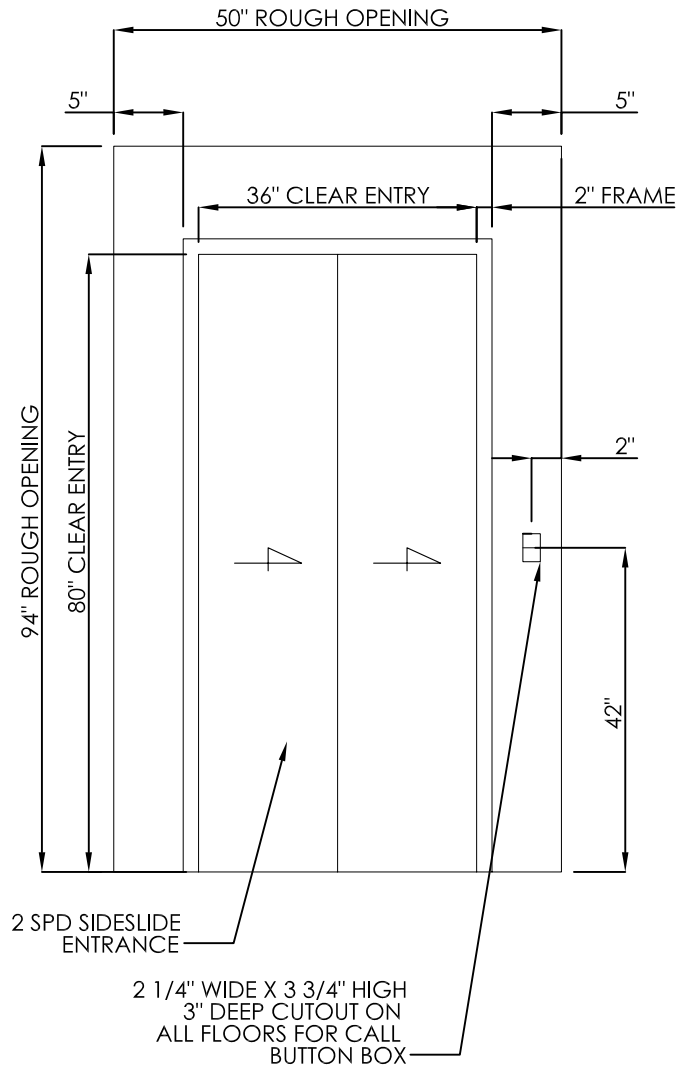


!WARNING!
SPACE BETWEEN DOOR AND HOISTWAY
MUST NOT EXCEED 3"

INTERLOCKS CONFORMING TO ASME A17.1
MUST BE INSTALLED AND ADJUSTED PER
THE MANUFACTURER'S INSTRUCTIONS.

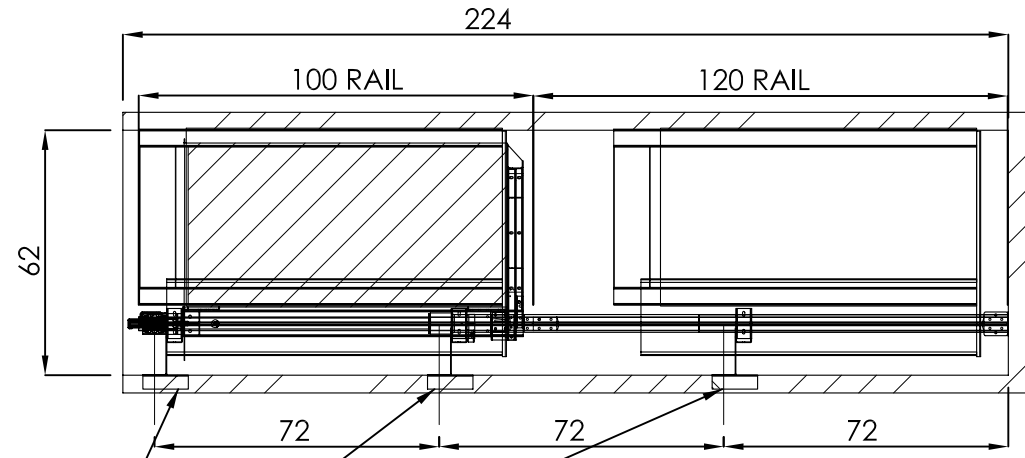
**!FAILURE TO COMPLY
MAY RESULT IN SERIOUS
INJURY OR DEATH!**

NOTE:
LEAVE ROUGH OPENING MIN
14" WIDER & 14" HIGHER THAN
CLEAR OPENING, AS SHOWN.



RAIL WEIGHT: 8 lbs/ft	
RAIL FORCES	
*R1 (Fx)	1075 lbs
*R2 (Fy)	358 lbs
R3 (Fz)	2500 lbs

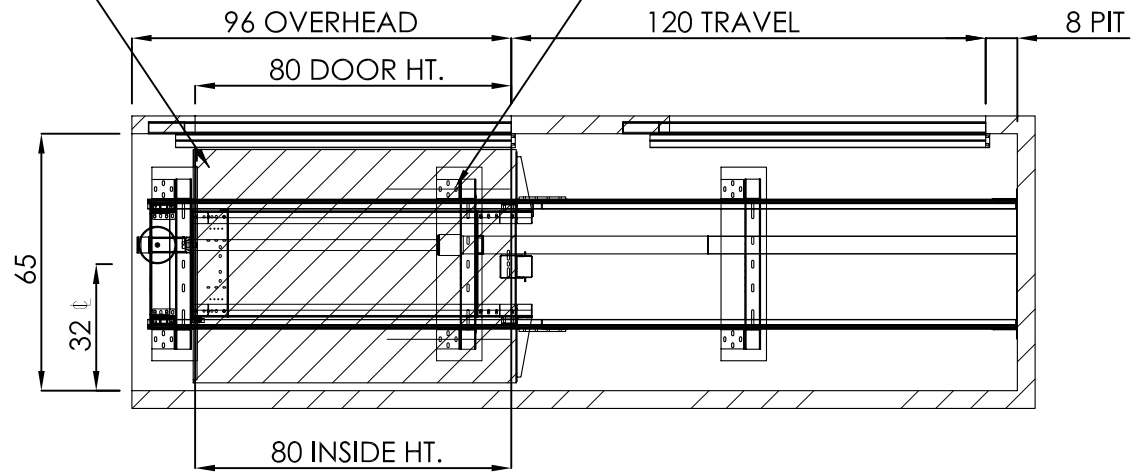
SIZE	Nationwide Lifts www.elevators.com	
A	P: 888-695-4387	E: info@elevators.com
PART NO. 40 X 54, 1R		
SHEET 1 OF 3		
DESCRIPTION: SLIDING DOORS, HYDRO		




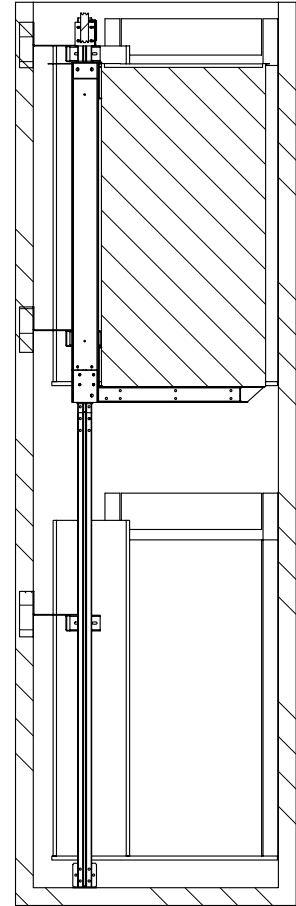
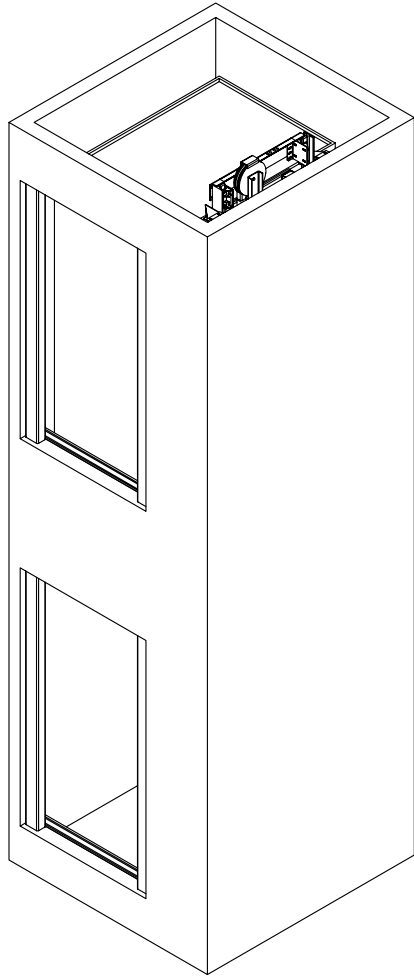
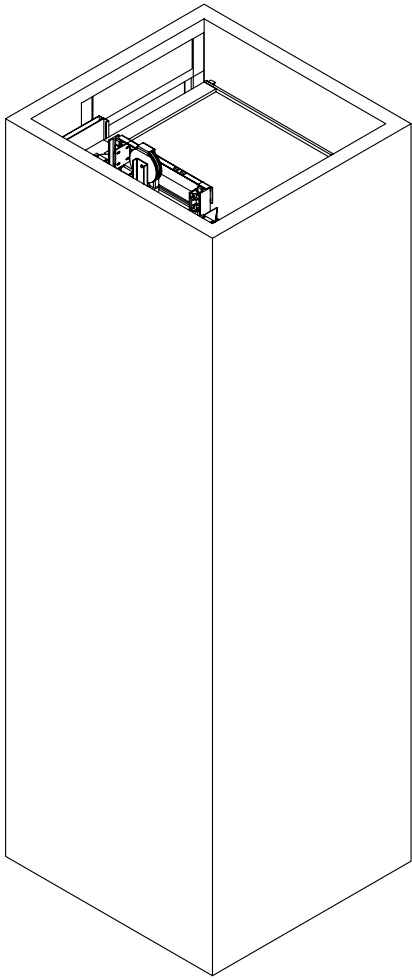
PROVIDE WALL CONSTRUCTION
SUITABLE FOR ATTACHMENT OF
RAIL BRACKETS AT SHOWN ELEVATION.
MUST BE CAPABLE OF 300LB PULLOUT
LOADING WITH MAX DEFLECTION OF 1/8".


BRACKET LOCATIONS MAY VARY
ACORDING TO TRAVEL

SPREADER BRACKETS
FASTEN WITH LAG SCREWS
2 PLACES PER SIDE BRACKET



SIZE	 www.elevators.com P: 888-695-4387 E: info@elevators.com
A	
PART NO.	40 X 54, 1R
DESCRIPTION:	SLIDING DOORS, HYDRO



SIZE	 Nationwide Lifts www.elevators.com
A	
PART NO.	
40 X 54, 1R	
SHEET 3 OF 3	
DESCRIPTION:	
SLIDING DOORS, HYDRO	

5



4

3

2

1