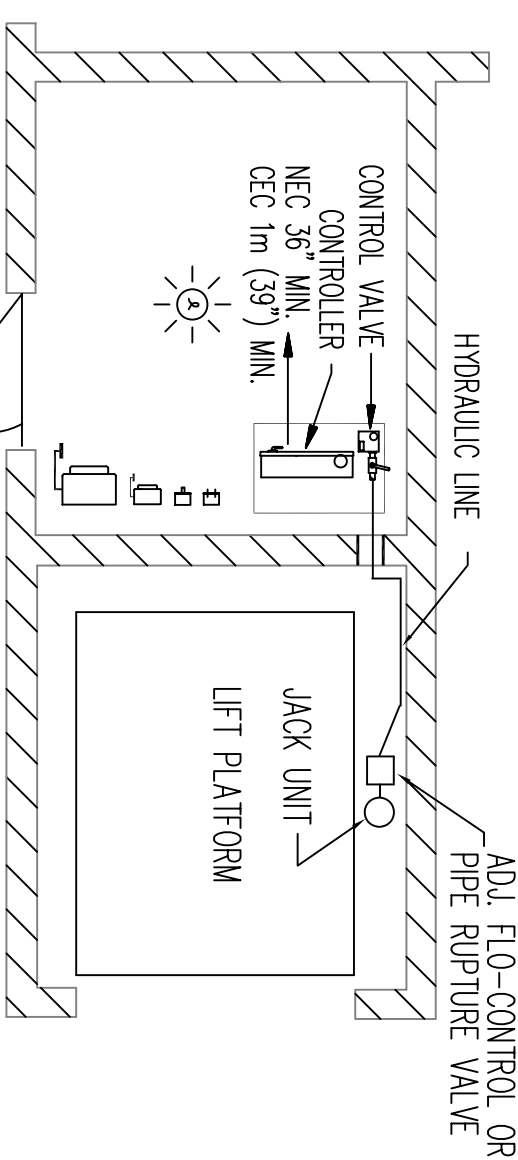
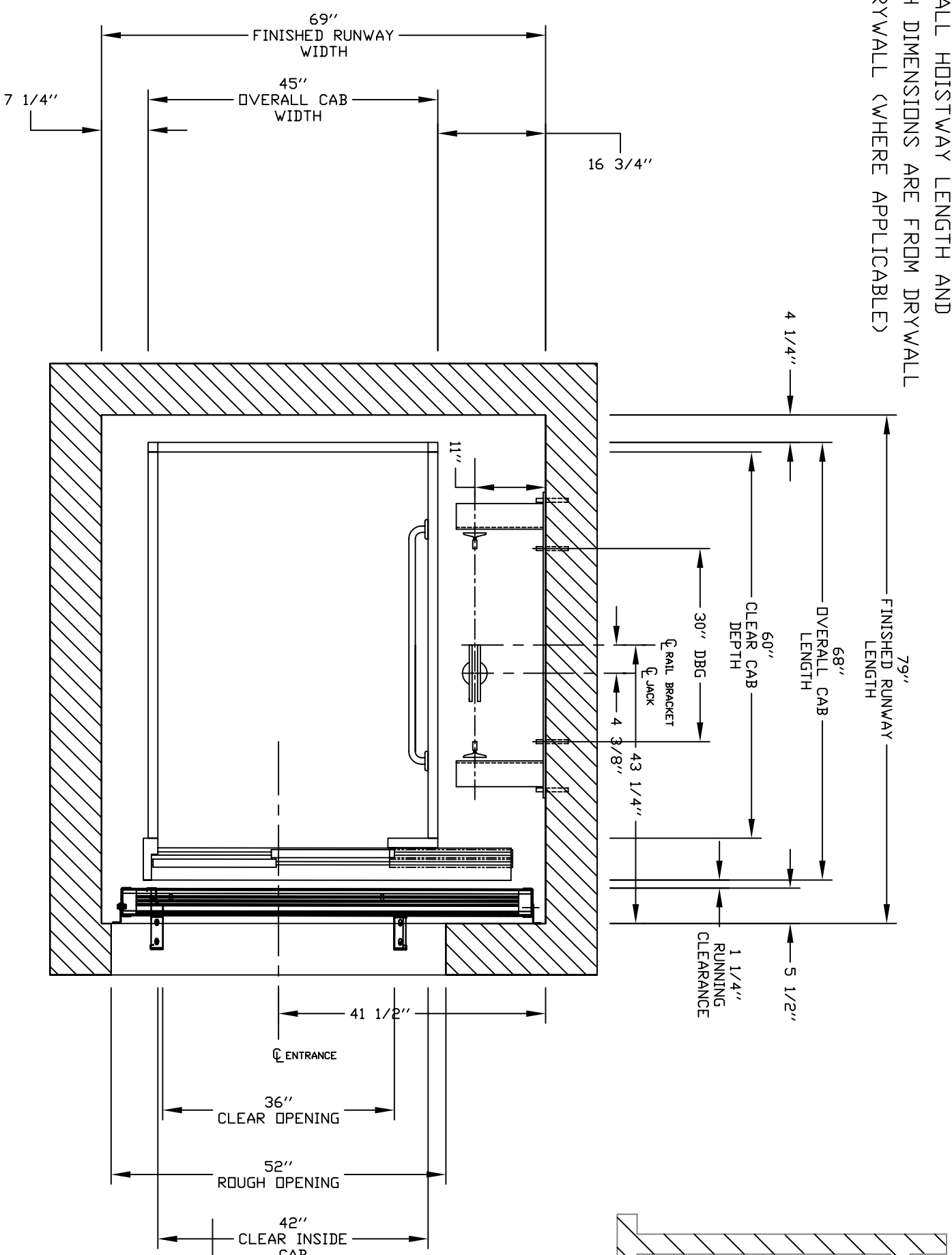


PLEASE NOTE:
 OVERALL HOISTWAY LENGTH AND
 WIDTH DIMENSIONS ARE FROM DRYWALL
 TO DRYWALL (WHERE APPLICABLE)



**PRELIMINARY DRAWING ONLY
 DRAWING APPROVAL:**

THIS DRAWING REFLECTS OUR INTERPRETATION OF THE INFORMATION PROVIDED BY THE DEALER ON THE ORDER FORM. THIS INFORMATION IS THE DEALER'S RESPONSIBILITY, AND IS THE BASIS FROM WHICH THIS LIFT IS DESIGNED AND MANUFACTURED. PLEASE INDICATE THE REQUESTED ACTION BY CHECKING ONE OF THE FOLLOWING BOXES AND SIGNING BELOW TO AUTHORIZE COMPLETION OF THIS ORDER.

- APPROVED WITH NO EXCEPTIONS
- MANUFACTURE PRODUCT AS PER DRAWING
- APPROVED WITH EXCEPTIONS, NO REAPPROVAL REQUIRED
- MAKE CHANGES AS NOTED, NO REAPPROVAL DRAWING REQUIRED
- CHANGE AS NOTED, REAPPROVAL REQUIRED
- MAKE CHANGES AS NOTED, SEND CORRECTED DRAWING FOR REAPPROVAL BEFORE MANUFACTURE

SIGNATURE: _____ DATE: _____
 CHANGES REQUEST:
 1. _____
 2. _____
 3. _____
 4. _____

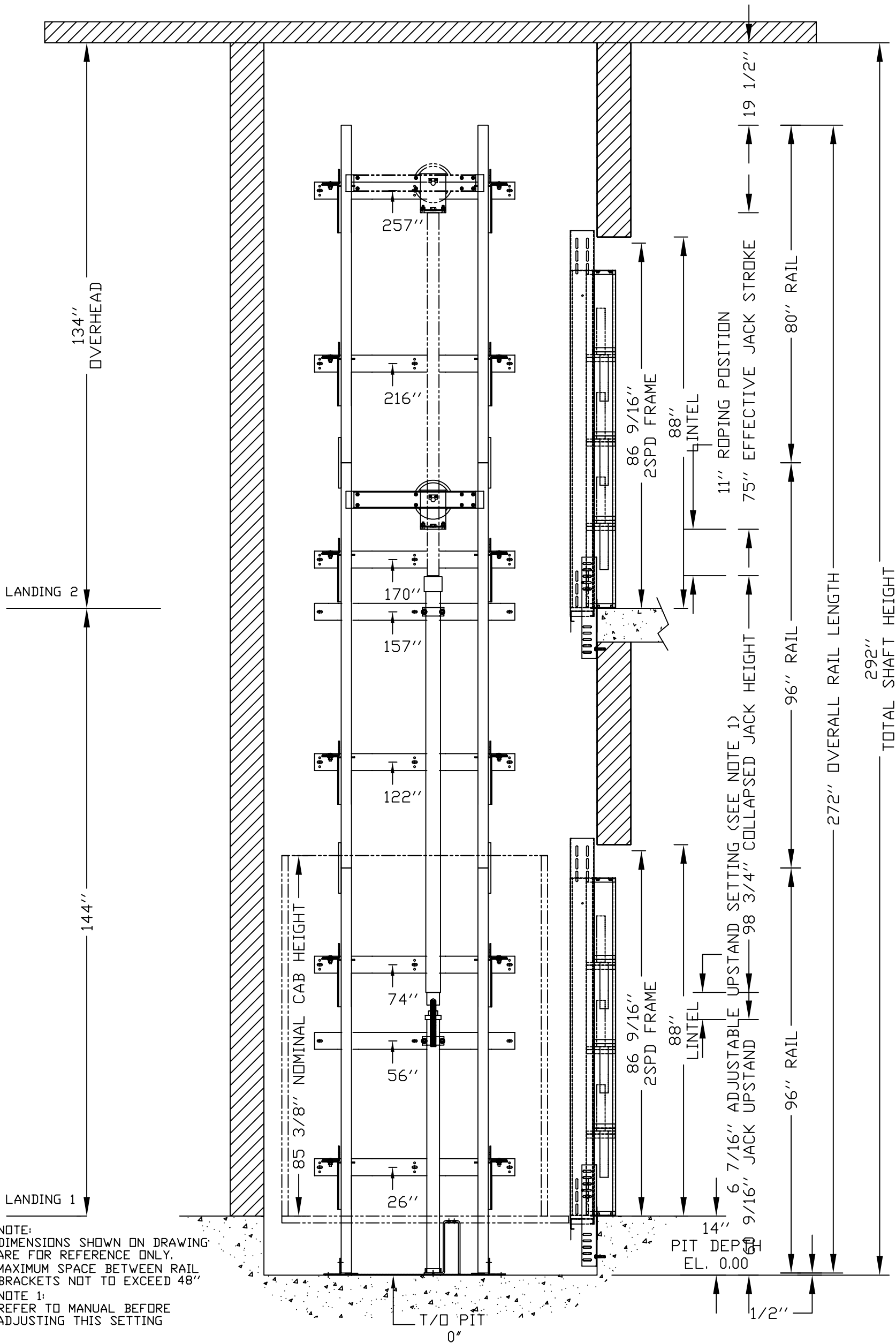
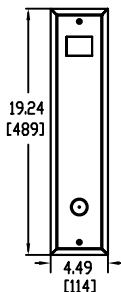
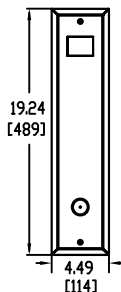
CAUTION: ONCE THE DRAWING IS APPROVED, JOB CANCELLATION FEES WILL APPLY

PLAN VIEW

| | | |
|--|---------------------------------|---|
| OFFICE USE ONLY: | | Port No. |
| CONFIGURATION VERSION STAMP: | 0.0 | Variant No. 48415 |
| MODULE VERSION STAMP: | D-S-67 | |
| CUSTOMER: | NATIONWIDE LIFTS | DATE: 06/13/15 |
| PROJECT: | LULA - 42 wide x 60 deep | REVISION DATE: 06/13/15 |
| ADDRESS: | Doors Same Side, Rails on Right | COMPLETED BY: <i>[Signature]</i> |
| | 888-323-8755 info@elevators.com | JOB No. <input type="checkbox"/> SHEET No. 1 OF 4 |
| www.elevators.com | | |

HALL CALL 1

HALL CALL 2



NOTE:
DIMENSIONS SHOWN ON DRAWING
ARE FOR REFERENCE ONLY.
MAXIMUM SPACE BETWEEN RAIL
BRACKETS NOT TO EXCEED 48\"/>

NOTE 1:
REFER TO MANUAL BEFORE
ADJUSTING THIS SETTING

PIT PROP PROVIDED IN CONFORMANCE TO CLAUSE 5.2.1.4.2

| | |
|------------------------------|---------|
| <i>OFFICE USE ONLY:</i> | |
| CONFIGURATION VERSION STAMP: | 0.0 |
| MODULE VERSION STAMP: | 0-S-6.7 |

| | |
|-------------|-------|
| Part No. | |
| Variant No. | 48415 |

ELEVATION VIEW B-B

| | |
|--|--|
| CUSTOMER: NATIONWIDE LIFTS | |
| PROJECT: LULA - 42 wide x 60 deep | |
| ADDRESS: Doors Same Side, Rails on Right 888-323-8755 info@elevators.com | |

| |
|--|
| DATE: 06/13/15 |
| REVISION DATE: 06/13/15 |
| COMPLETED BY: andy.dornley@nlifts.com |

Nationwide Lifts
www.elevators.com

savaria

JOB No. SHEET No. **2** OF **4**

PROVISIONS BY OTHERS

*GENERAL

HOISTWAY - THE HOISTWAY MUST BE IN ACCORDANCE WITH *SAFETY CODE FOR ELEVATORS AND ESCALATORS* (ASME A17.1) AND ALL STATE AND LOCAL CODES.
PLUMB HOISTWAY - DUE TO CLOSE RUNNING CLEARANCES OWNER/AGENT MUST ENSURE THAT HOISTWAY AND PIT (WHERE PROVIDED) ARE LEVEL, PLUMB AND SQUARE AND ARE IN ACCORDANCE WITH THE DIMENSIONS ON THESE DRAWINGS.

MINIMUM OVERHEAD CLEARANCE - OWNER/AGENT MUST ENSURE MINIMUM OVERHEAD CLEARANCE IS IN COMPLIANCE WITH CODES.

CONSTRUCTION SITE - OWNER/AGENT TO PROVIDE ALL MASONRY, CARPENTRY AND DRYWALL WORK AS REQUIRED AND SHALL PATCH AND MAKE GOOD (INCLUDING FINISH PAINTING) ALL AREAS WHERE WALLS/FLOORS MAY REQUIRE TO BE CUT, DRILLED OR ALTERED IN ANY WAY TO PERMIT THE PROPER INSTALLATION OF THE LIFT. **DIMENSIONS** - CONTRACTOR/CUSTOMER TO VERIFY ALL DIMENSIONS AND REPORT ANY DISCREPANCIES TO OUR OFFICE IMMEDIATELY.

*STRUCTURAL

FLOOR/SUPPORT WALL LOADS - STRUCTURE TO ANCHOR A CRANK SHAFT AND SAFETY HARNESS, WHERE APPLICABLE/NEEDED, TO BE PROVIDED BY CONTRACTOR. CONTRACTOR TO ASSURE THAT BUILDING AND SHAFT WILL SAFELY SUPPORT ALL LOADS IMPOSED BY THE LIFT EQUIPMENT. REFER TO THE TABLES ON THIS DRAWING FOR LOADS IMPOSED BY THE EQUIPMENT.

WHERE DOORS ARE REQUIRED - SUITABLE LINTELS MUST BE PROVIDED BY OWNER/AGENT. DOOR FRAMES ARE NOT DESIGNED TO SUPPORT OVERHEAD WALL LOADS.

*MACHINE ROOM

LOCATION / ACCESS - MACHINE ROOM LOCATED AT THE LOWEST LEVEL ADJACENT TO HOISTWAY, UNLESS SHOWN OTHERWISE ON THE LAYOUT DRAWINGS. FIELD ADJUSTMENT BY INSTALLER MAY BE NECESSARY TO MEET JOB SITE CONDITIONS OR REGULATIONS. MACHINE ROOM DOOR IS TO BE LOCKABLE AND IS TO MEET THE REQUIREMENTS OF THE AUTHORITY HAVING JURISDICTION. SLEEVES FOR OIL & ELECTRIC LINES - FROM MACHINE ROOM TO RUNWAY AS REQUIRED. (POSITION PER INSTALLERS INSTRUCTIONS). MINIMUM SCHEDULE 80 PIPING REQUIRED FOR OIL LINES.

| DISCONNECT SIZE | TIME DELAY | FUSE SIZE | VOLTS | PHASE | AMPERAGE |
|-----------------|------------|-----------|----------|-------------|-----------|
| MOTOR & EQUIP | 30 AMPS | 30 AMPS | 208 volt | Three Phase | 15.6 AMPS |
| CAB LIGHTS | 15 AMPS | 15 AMPS | 115 V | 1 | |

*ELECTRICAL

POWER SUPPLY - (SEE SPECIFICATIONS) LOCKABLE FUSED DISCONNECT WITH AUXILIARY CONTACT TO BRAKE THE BATTERY FEED, OR CIRCUIT BREAKERS WITH A 3-POLE BREAKER FOR BATTERY FEED REQUIRED, IN COMPLIANCE WITH ELECTRICAL CODE, AS FOLLOWS:
 (LOCATED ON WALL ON LOCK JAMB SIDE OF MACHINE ROOM DOOR) **PERMANENT POWER** - BEFORE INSTALLATION CAN BEGIN, PERMANENT POWER MUST BE SUPPLIED.

LIGHTING - THE ILLUMINATION SHALL BE NOT LESS THAN 200 LX (19 FC) AT THE FLOOR LEVEL IN ALL MACHINE ROOMS AND MACHINERY SPACES. ENSURE AT LEAST 100 LX (10 FC) AMBIENT LIGHTING OVER LIFT AREA. **PHONE** - NEED A DEDICATED PHONE LAND LINE (NOT VOIP) FOR THE PHONE, WHERE APPLICABLE. FOR VOIP PLEASE CONTACT SAVARIA.

*ENTRANCES

FASCIA PANEL BELOW UPPER LEVEL ENTRANCE - WHERE REQUIRED, FASCIA PANEL MUST BE FASTENED TO A SOLID WALL AND BE PERPENDICULAR TO THE FLOOR AND WALLS. HOISTWAY FASCIA IS NOT SELF-SUPPORTING FOR LONG, CONTINUOUS RUNS VOID OF ENTRANCES. ADEQUATE SUPPORT FOR THE FASCIA MUST BE PROVIDED.

ENTRANCE ASSEMBLIES - ENTRANCE ASSEMBLIES MUST BE ADJUSTED TO ALIGN WITH PLATFORM AND INTERLOCK EQUIPMENT. OTHERS TO ALLOW AN ADEQUATE ROUGH OPENING.

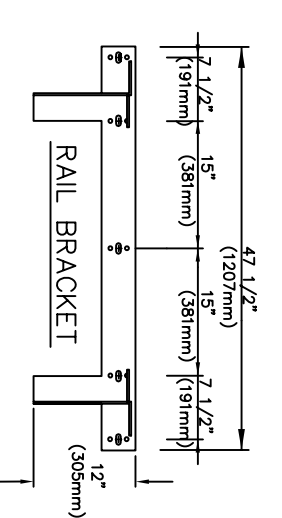
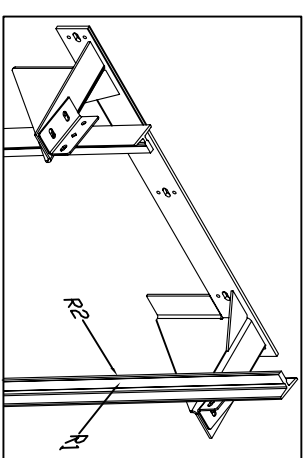
RETURN WALLS - RETURN WALLS AT ENTRANCES MUST BE BUILT-IN BY OTHERS AFTER ENTRANCE ASSEMBLIES ARE IN PLACE. ENTRANCE ASSEMBLY MUST BE SECURELY FASTENED TO WALLS BY ELEVATOR CONTRACTOR.

GENERAL

CLASSIFICATION: Public Building
APPLIED CODE: CSA/ASME A17.1/B44-2010 Sec 5.2
MODEL: Diron
CAPACITY: 1400lbs
NOMINAL SPEED: 30 fpm
TRAVEL: 144"
PIT DEPTH: 14"
POWER SUPPLY: 60 Hz Three Phase 208 volt

HYDRAULIC

PUMP MFR: CONCORD
PUMP MODEL: VICKERS 3P
MOTOR: 5.0 hp
VALVE MODEL NO.: EPV - 7
VALVE COIL VOLTS: 24 V DC
MAX WORKING PRESSURE: 1500 psi (10340 kPa)
RELIEF VALVE SETTING: MAX 25% ABOVE ACTUAL WORKING PRESSURE
RESERVOIR: 22 Gal.
HOSE & SAFETY VALVE: no

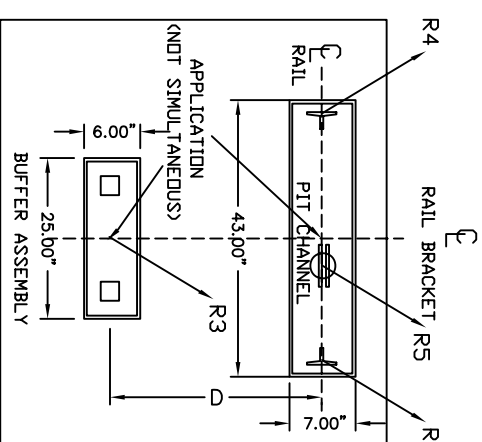


| PIT RE-ACTION FORCE | FORCE |
|---------------------|----------|
| R3 | 8000 LBS |
| R4 | 3000 LBS |
| R5 | 9000 LBS |

RAIL FORCES

| *R1 | *R2 |
|---------------------------|---------|
| 720 lbf | 260 lbf |
| RAIL WEIGHT: 80 lbs / 4ft | |

FOR TOTAL PULL-OUT FORCE ON RAIL BRACKET, R1 MUST BE DOUBLED eg. 2 x 720 = 1440 lbf
 FOR LOCAL APPLICATION OF PIT LOAD, SEE PIT CHANNEL/BUFFER SKETCH.



| CAB WIDTH | DIST (D) |
|-----------|----------|
| 42" | 26.75" |
| 48" | 30.75" |
| 54" | 33.75" |
| | 36.75" |

FIRST DOOR BY LANDING CHART

| DOOR TYPE | ENTRANCE SIDE | DOOR LATCH | LOCK TYPE | AUTO DOOR OPENER | HALL CALL KEY SWITCH | HOISTWAY ACCESS | FLOOR MARKING | MAIN EGRESS FLOOR |
|--------------------------------|---------------|------------|----------------|------------------|----------------------|-----------------|---------------|-------------------|
| 2 Speed Sliding Doors (Wittur) | Side C | Side C | Not Applicable | Not Applicable | Keyless | yes | 1 | 2 |

OPTIONS

FASTENERS: Concrete Anchors
FIREMAN'S SERVICE: Fireman Service
DIVERSPEED GOV./VALVE: DiverSpeed Valve
CONDUCTOR CABLE: 40' cable
DATA ACCESS TERMINAL: NO DAT
DUPLINE PROGRAMMING TOOL: Programmer not included
TEMP. RUN BUTTON: Temp Run Button not included
SPEEDY SET-UP JIG: Speedy Jig Not required

CAR FINISH DETAILS

CAB PANEL SELECTION: White Steel Colour
CEILING SELECTION: standard (white)
CAB ENTRANCE: Match Cab
PLASTIC LAMINATE FINISHES: Not Applicable
PIT LIGHT FINISH: Stainless Steel
TRIM COLOUR: Not Applicable
CAR STATION PLATE: stainless steel
HAND RAIL TYPE: Stainless Steel Cylindrical
CAB FLOORING: Plywood Floor
FINISHED FLOOR THICKNESS: 3/8" finish
TELEPHONE BOX: no
TELEPHONE BOX FINISH: Not Applicable
HAND FREE PHONE: yes, with phone line monitoring

CAR DIMENSIONS/PLATFORM GATES

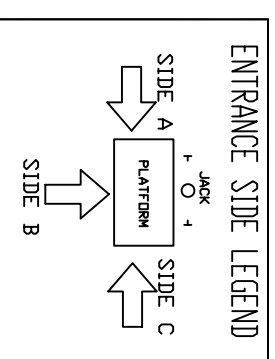
CAB TYPE: Type 1 Right Hand
CAB HEIGHT: 84" Standard Cab Height
CAB OPERATION: automatic operation
GATES REQUIRED: Automatic Operated Gates
GATE TYPE: 2 Spd Doors (Wittur) match CAB
GATE FINISH: Baked Enamel White
INSIDE PLATFORM AREA: 17.5 sf.
HOISTWAY

DOOR TYPE: 2 spd Sliding Doors (Wittur)
HOISTWAY DOORS FINISH: Standard Finish (Primer Grey)
HOISTWAY FINISH: Masonary
JACK UNIT

EFFECTIVE STROKE: 75"
SOLID PLUNGER D/D: 2 3/4 "
CYLINDER D/D: 3 1/2 "
CYLINDER I/D: 3 "
SPLIT CYLINDER? no
COLLAPSED LENGTH: 98 3/4 "
CYLINDER WALL THICKNESS: 1/4 "

SUSPENSION

TYPE: AIRCRAFT CABLE 2 X 3/8" DIA.
CONSTRUCTION: IWRC 7 X 19, GALVANIZED STEEL RHRL
NOMINAL STRENGTH: 14,400 lbs Per Cable
SPECS: M-DTL-83420
DIVER SPEED VALVE
MODEL: AS PER SECTION 319.4.7
 BLAIN R10 AA
 (1500psi (10340 kPa) MAX WORKING PRESSURE)



OFFICE USE ONLY:

CONTRIBUTION VERSION STAMP: O.O
MODULE VERSION STAMP: I-S-6-7

Part No.: 48415
Variant No.: 48415

Nationwide Lifts
 www.elevators.com

savaria

JOB No.: _____ **SHEET No.:** 3 OF 4

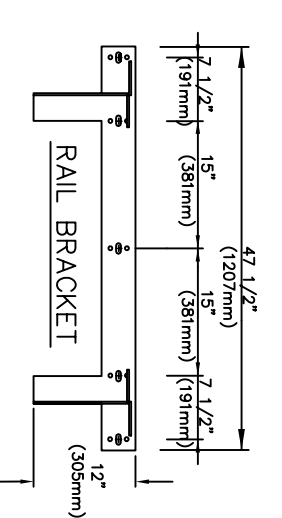
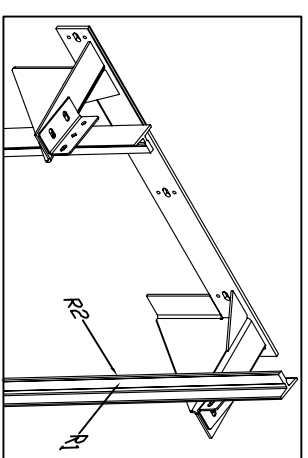
SPECIFICATIONS

GENERAL

CLASSIFICATION: Public Building
APPLIED CODE: CSA/ASME A17.1/B44-2010 Sec 5.2
MODEL: Diron
CAPACITY: 1400lbs
NOMINAL SPEED: 30 fpm
TRAVEL: 144"
PIT DEPTH: 14"
POWER SUPPLY: 60 Hz Three Phase 208 volt

HYDRAULIC

PUMP MFR: CONCORD
PUMP MODEL: VICKERS 3P
MOTOR: 5.0 hp
VALVE MODEL NO.: EPV - 7
VALVE COIL VOLTS: 24 V DC
MAX WORKING PRESSURE: 1500 psi (10340 kPa)
RELIEF VALVE SETTING: MAX 25% ABOVE ACTUAL WORKING PRESSURE
RESERVOIR: 22 Gal.
HOSE & SAFETY VALVE: no

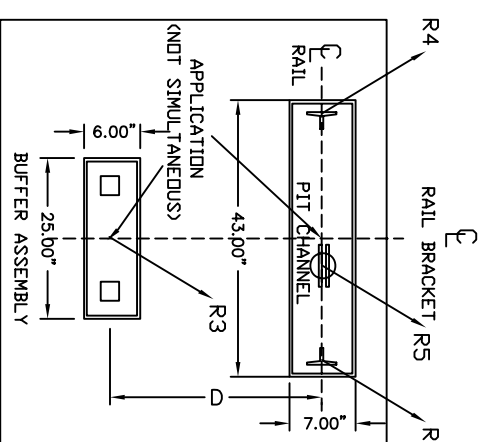


| PIT RE-ACTION FORCE | FORCE |
|---------------------|----------|
| R3 | 8000 LBS |
| R4 | 3000 LBS |
| R5 | 9000 LBS |

RAIL FORCES

| *R1 | *R2 |
|---------------------------|---------|
| 720 lbf | 260 lbf |
| RAIL WEIGHT: 80 lbs / 4ft | |

FOR TOTAL PULL-OUT FORCE ON RAIL BRACKET, R1 MUST BE DOUBLED eg. 2 x 720 = 1440 lbf
 FOR LOCAL APPLICATION OF PIT LOAD, SEE PIT CHANNEL/BUFFER SKETCH.



| CAB WIDTH | DIST (D) |
|-----------|----------|
| 42" | 26.75" |
| 48" | 30.75" |
| 54" | 33.75" |
| | 36.75" |

FIRST DOOR BY LANDING CHART

| DOOR TYPE | ENTRANCE SIDE | DOOR LATCH | LOCK TYPE | AUTO DOOR OPENER | HALL CALL KEY SWITCH | HOISTWAY ACCESS | FLOOR MARKING | MAIN EGRESS FLOOR |
|--------------------------------|---------------|------------|----------------|------------------|----------------------|-----------------|---------------|-------------------|
| 2 Speed Sliding Doors (Wittur) | Side C | Side C | Not Applicable | Not Applicable | Keyless | yes | 1 | 2 |

OPTIONS

FASTENERS: Concrete Anchors
FIREMAN'S SERVICE: Fireman Service
DIVERSPEED GOV./VALVE: DiverSpeed Valve
CONDUCTOR CABLE: 40' cable
DATA ACCESS TERMINAL: NO DAT
DUPLINE PROGRAMMING TOOL: Programmer not included
TEMP. RUN BUTTON: Temp Run Button not included
SPEEDY SET-UP JIG: Speedy Jig Not required

CAR FINISH DETAILS

CAB PANEL SELECTION: White Steel Colour
CEILING SELECTION: standard (white)
CAB ENTRANCE: Match Cab
PLASTIC LAMINATE FINISHES: Not Applicable
PIT LIGHT FINISH: Stainless Steel
TRIM COLOUR: Not Applicable
CAR STATION PLATE: stainless steel
HAND RAIL TYPE: Stainless Steel Cylindrical
CAB FLOORING: Plywood Floor
FINISHED FLOOR THICKNESS: 3/8" finish
TELEPHONE BOX: no
TELEPHONE BOX FINISH: Not Applicable
HAND FREE PHONE: yes, with phone line monitoring

CAR DIMENSIONS/PLATFORM GATES

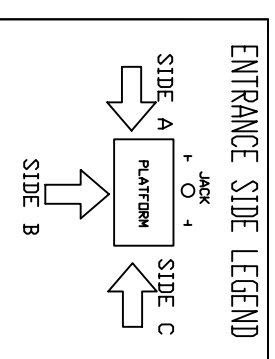
CAB TYPE: Type 1 Right Hand
CAB HEIGHT: 84" Standard Cab Height
CAB OPERATION: automatic operation
GATES REQUIRED: Automatic Operated Gates
GATE TYPE: 2 Spd Doors (Wittur) match CAB
GATE FINISH: Baked Enamel White
INSIDE PLATFORM AREA: 17.5 sf.
HOISTWAY

DOOR TYPE: 2 spd Sliding Doors (Wittur)
HOISTWAY DOORS FINISH: Standard Finish (Primer Grey)
HOISTWAY FINISH: Masonary
JACK UNIT

EFFECTIVE STROKE: 75"
SOLID PLUNGER D/D: 2 3/4 "
CYLINDER D/D: 3 1/2 "
CYLINDER I/D: 3 "
SPLIT CYLINDER? no
COLLAPSED LENGTH: 98 3/4 "
CYLINDER WALL THICKNESS: 1/4 "

SUSPENSION

TYPE: AIRCRAFT CABLE 2 X 3/8" DIA.
CONSTRUCTION: IWRC 7 X 19, GALVANIZED STEEL RHRL
NOMINAL STRENGTH: 14,400 lbs Per Cable
SPECS: M-DTL-83420
DIVER SPEED VALVE
MODEL: AS PER SECTION 319.4.7
 BLAIN R10 AA
 (1500psi (10340 kPa) MAX WORKING PRESSURE)



OFFICE USE ONLY:

CONTRIBUTION VERSION STAMP: O.O
MODULE VERSION STAMP: I-S-6-7

Part No.: 48415
Variant No.: 48415

Nationwide Lifts
 www.elevators.com

savaria

JOB No.: _____ **SHEET No.:** 3 OF 4

Data Sheet
 LIMITED USE LIMITED APPLICATION

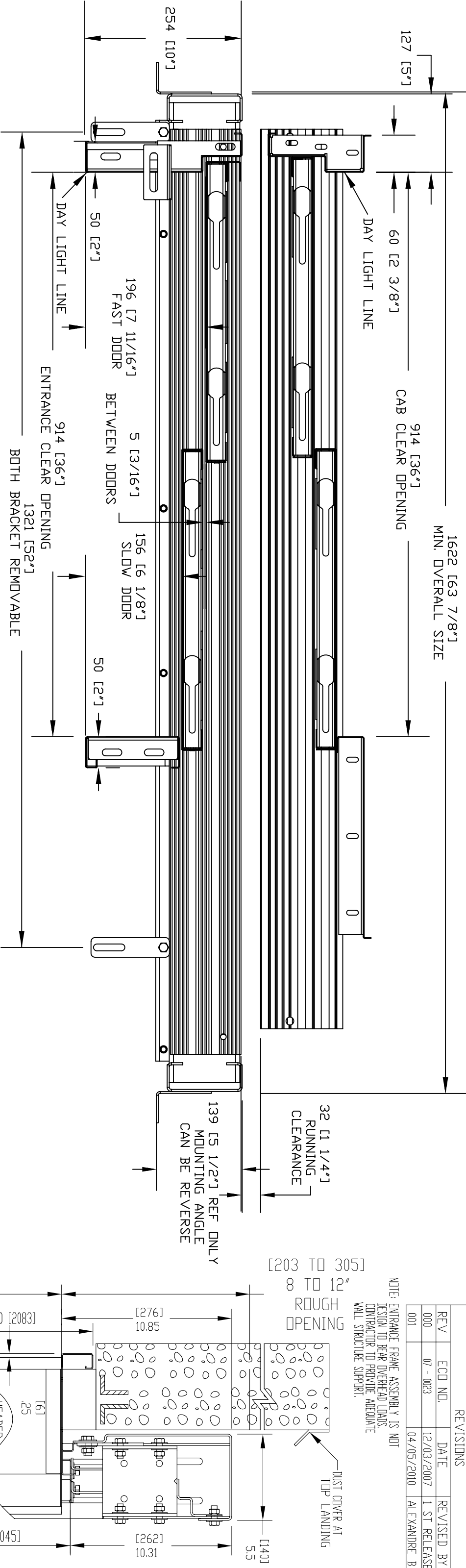
PROJECT: LULA - 42 wide x 60 deep
ADDRESS: Doors Same Side, Rails on Right
 888-323-8755 info@elevators.com

CUSTOMER: NATIONWIDE LIFTS
DATE: 06/13/15
COMPLETED BY: andrew@nwl.com

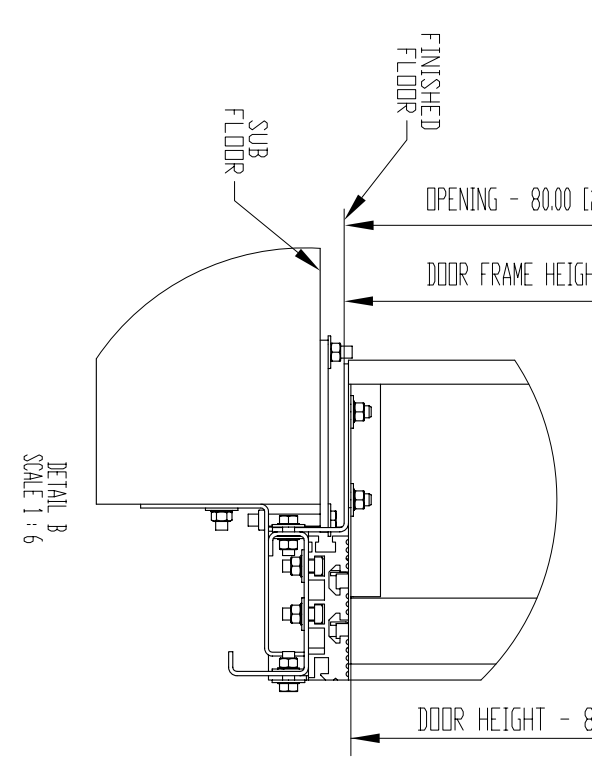
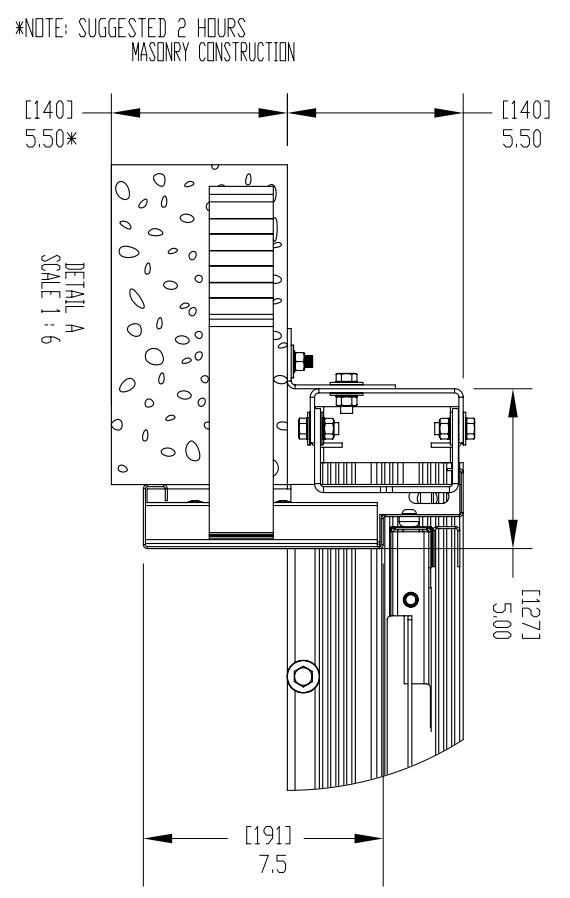
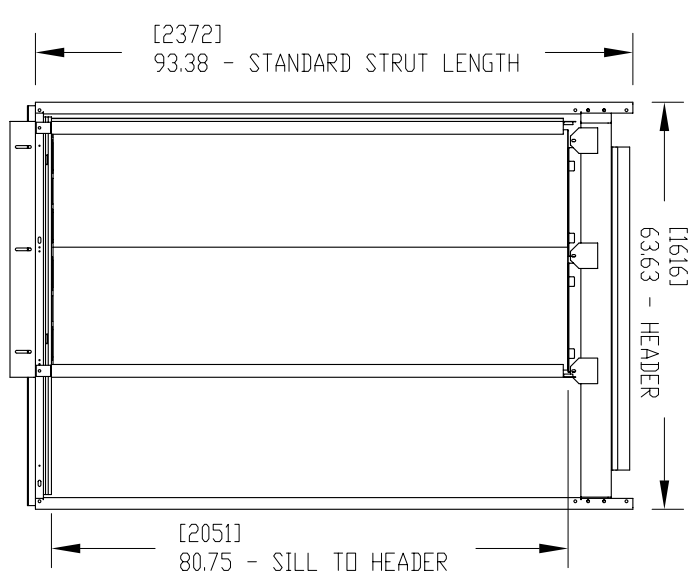
REVISION DATE: 06/13/15
REVISION BY: andrew@nwl.com

| REV | ECD NO. | DATE | REVISED BY |
|-----|-----------|------------|--------------|
| 000 | 07 - 0023 | 12/03/2007 | 1 ST RELEASE |
| 001 | | 04/05/2010 | ALEXANDRE B |

NOTE: ENTRANCE FRAME ASSEMBLY IS NOT DESIGN TO BEAR OVERHEAD LOADS. CONTRACTOR TO PROVIDE ADEQUATE WALL STRUCTURE SUPPORT.



ENTRANCE LOADS ON BUILDING
 RH = 5000 N (1125 lbF)
 RVD = 1550 N (350 lbF)
 RVU = 1000 N (225 lbF)
 PER SECTION 2.11.11.8.



LEFT HAND SHOWN

LANDING 2 SP. DOOR ASSEMBLY
 MASONRY CONSTRUCTION 36 X 80

CUSTOMER: NATIONWIDE LEFTS
 PROJECT: LULA - 42 wide x 60 deep
 ADDRESS: Doors Same Side, Rails on Right
 888-323-8755 info@elevators.com

DATE: 06/13/15
 COMPLETED BY:

OFFICE USE ONLY:
 CONFIGURATION VERSION STAMP: 0.0
 MODULE VERSION STAMP: I-S-67

Port No. 48415
 Variant No.

www.elevators.com

www.savarria.com

SHEET No. 4 OF 4