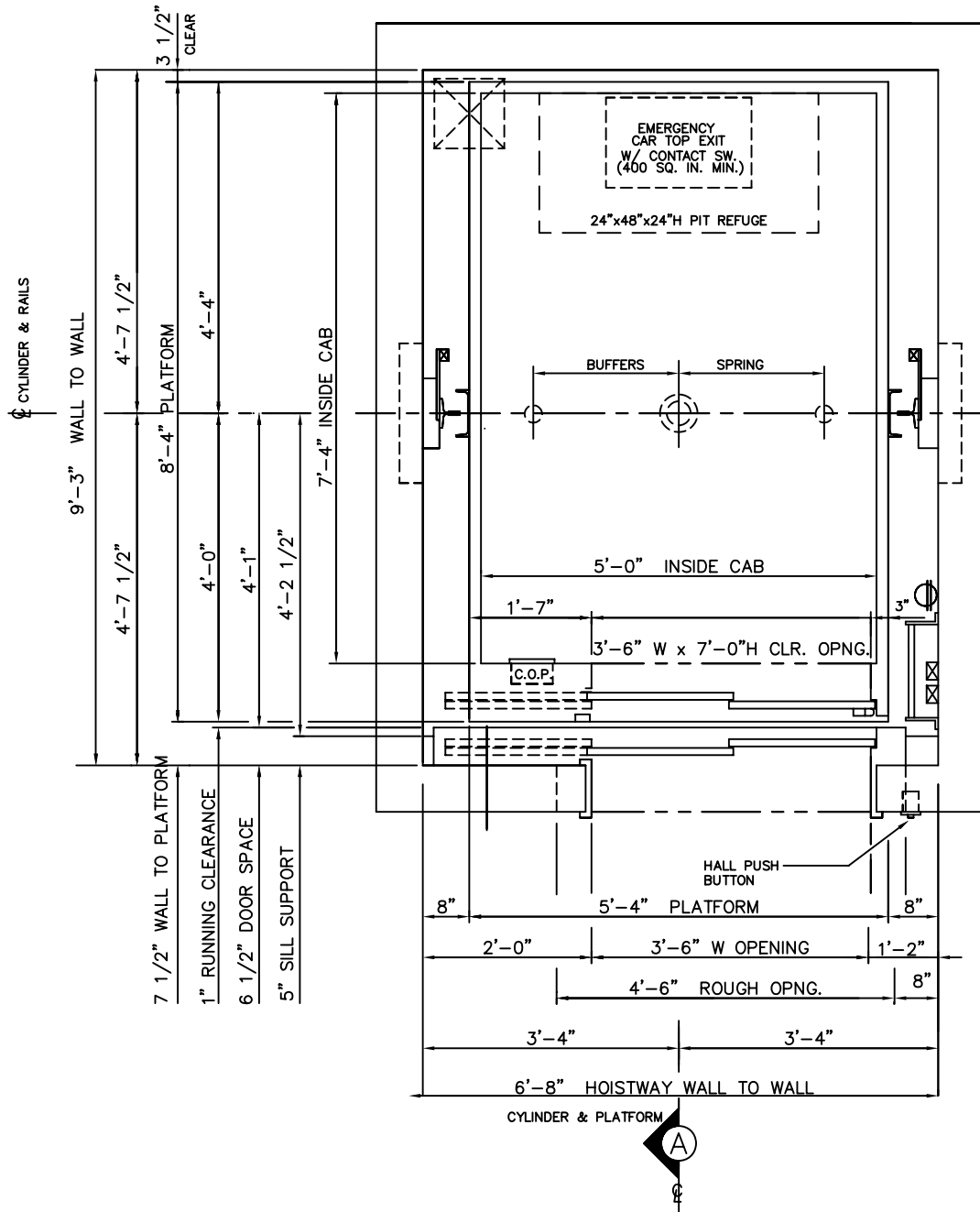


3500 LBS. HOSPITAL INGROUND HYDRAULIC FRONT RIGHT OPENING



MEETS 24" X 84"
STRETCHER REQUIREMENTS

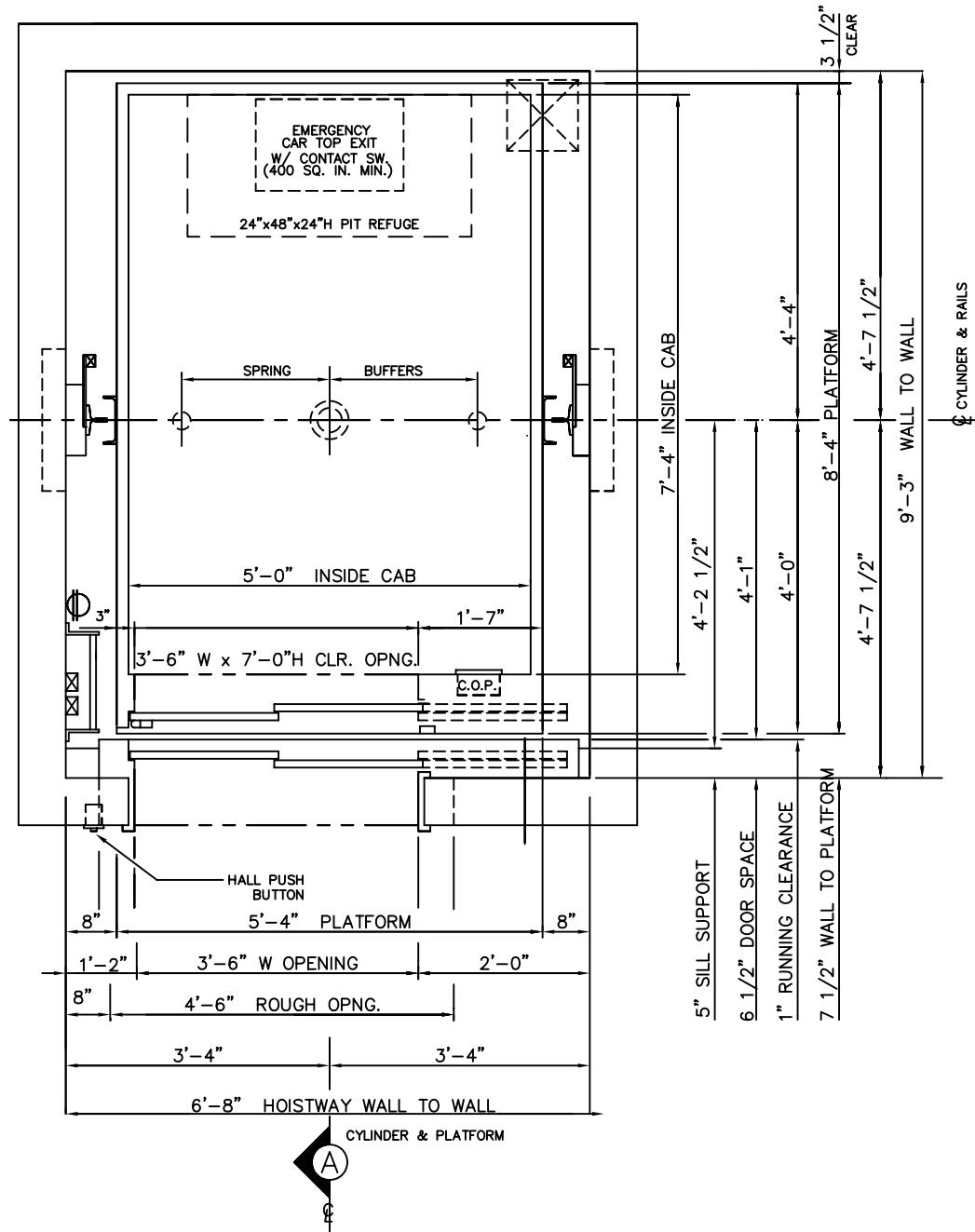
HOISTWAY PLAN

ALL DIMENSIONS ARE SUBJECT TO CHANGE WITHOUT NOTICE.
CONSULT NATIONWIDE LIFTS CO. FOR CONFIRMATION.



P: 888-695-4387, E: info@elevators.com

3500 LBS. HOSPITAL INGROUND HYDRAULIC FRONT LEFT OPENING



MEETS 24" X 84"
STRETCHER REQUIREMENTS

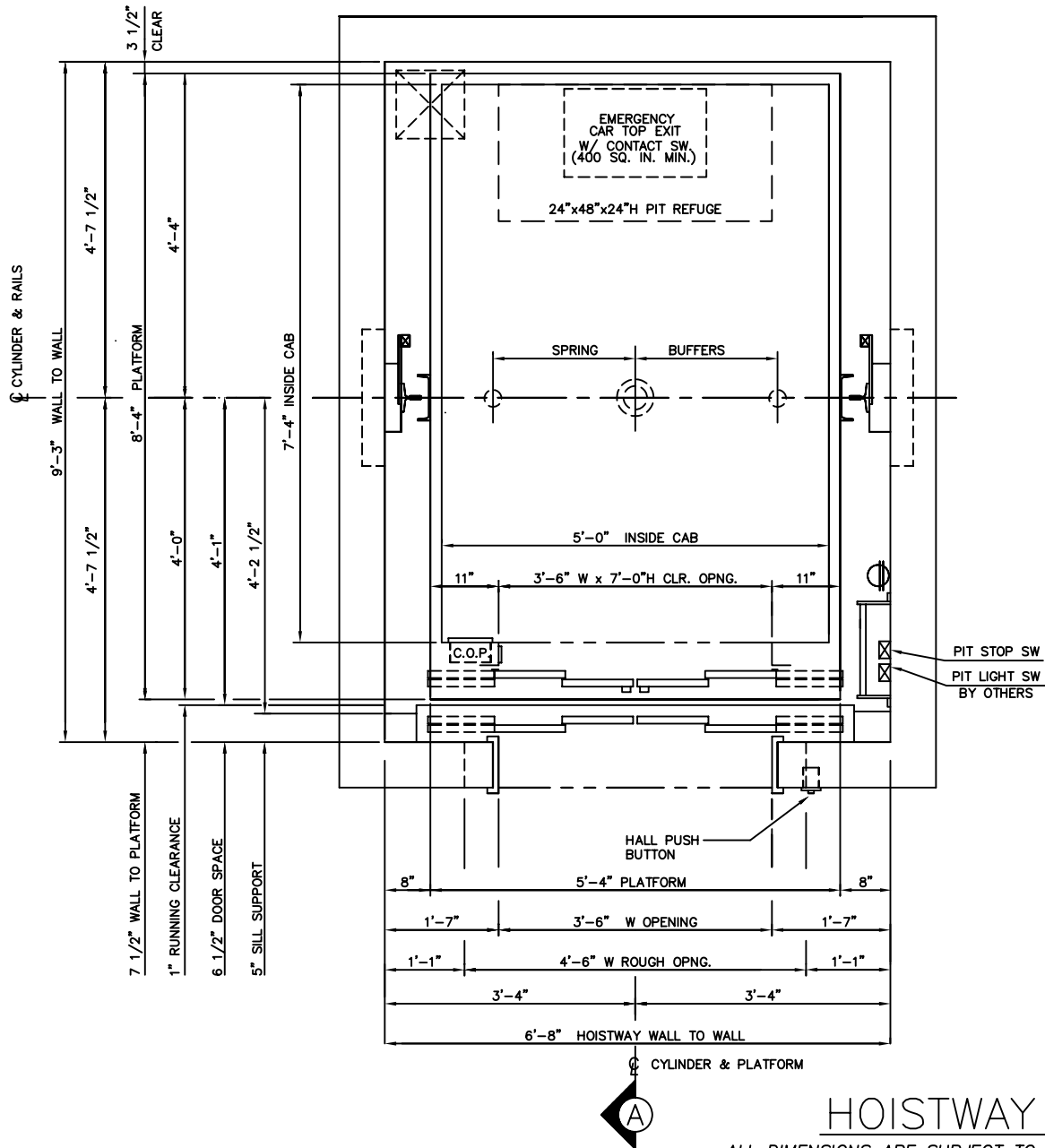
HOISTWAY PLAN

ALL DIMENSIONS ARE SUBJECT TO CHANGE WITHOUT NOTICE.
CONSULT NATIONWIDE LIFTS CO. FOR CONFIRMATION.



P: 888-695-4387, E: info@elevators.com

3500 LBS. HOSPITAL INGROUND HYDRAULIC FRONT CENTER OPENING



HOISTWAY PLAN

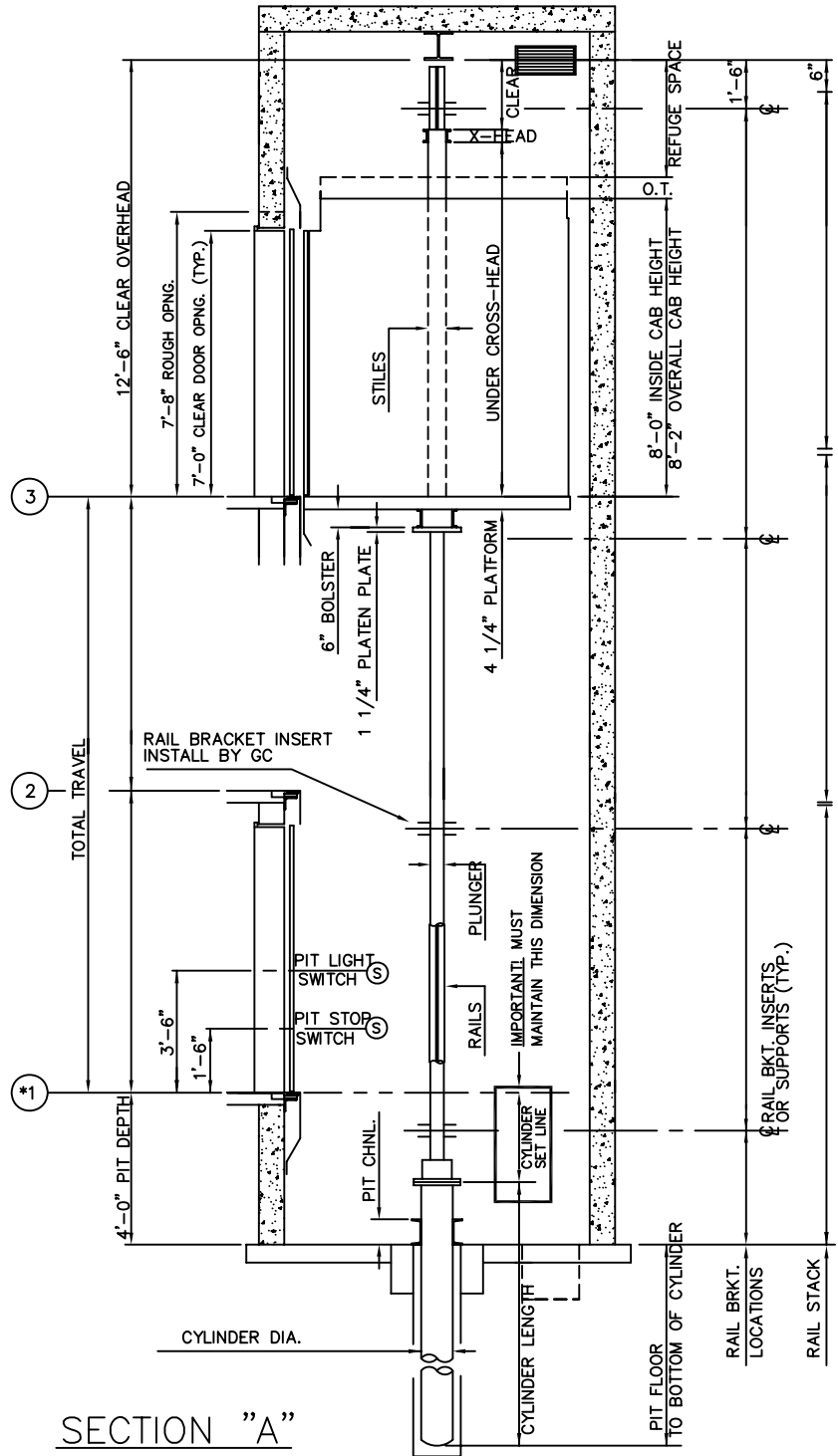
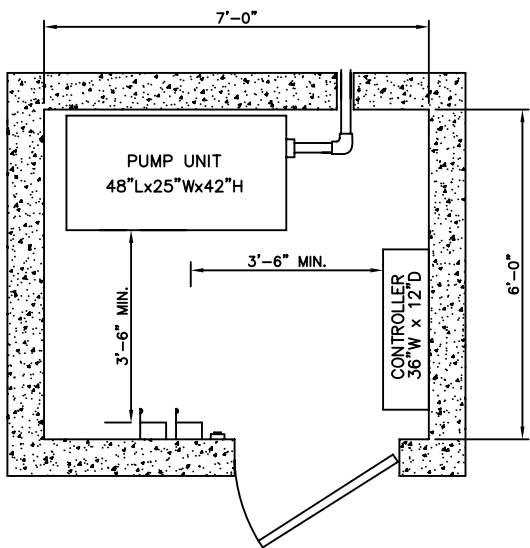
ALL DIMENSIONS ARE SUBJECT TO CHANGE WITHOUT NOTICE.
CONSULT NATIONWIDE LIFTS CO. FOR CONFIRMATION.

MEETS 24" X 84"
STRETCHER REQUIREMENTS



P: 888-695-4387, E: info@elevators.com

3500 LBS. HOSPITAL INGROUND HYDRAULIC FRONT OPENING



P: 888-695-4387, E: info@elevators.com