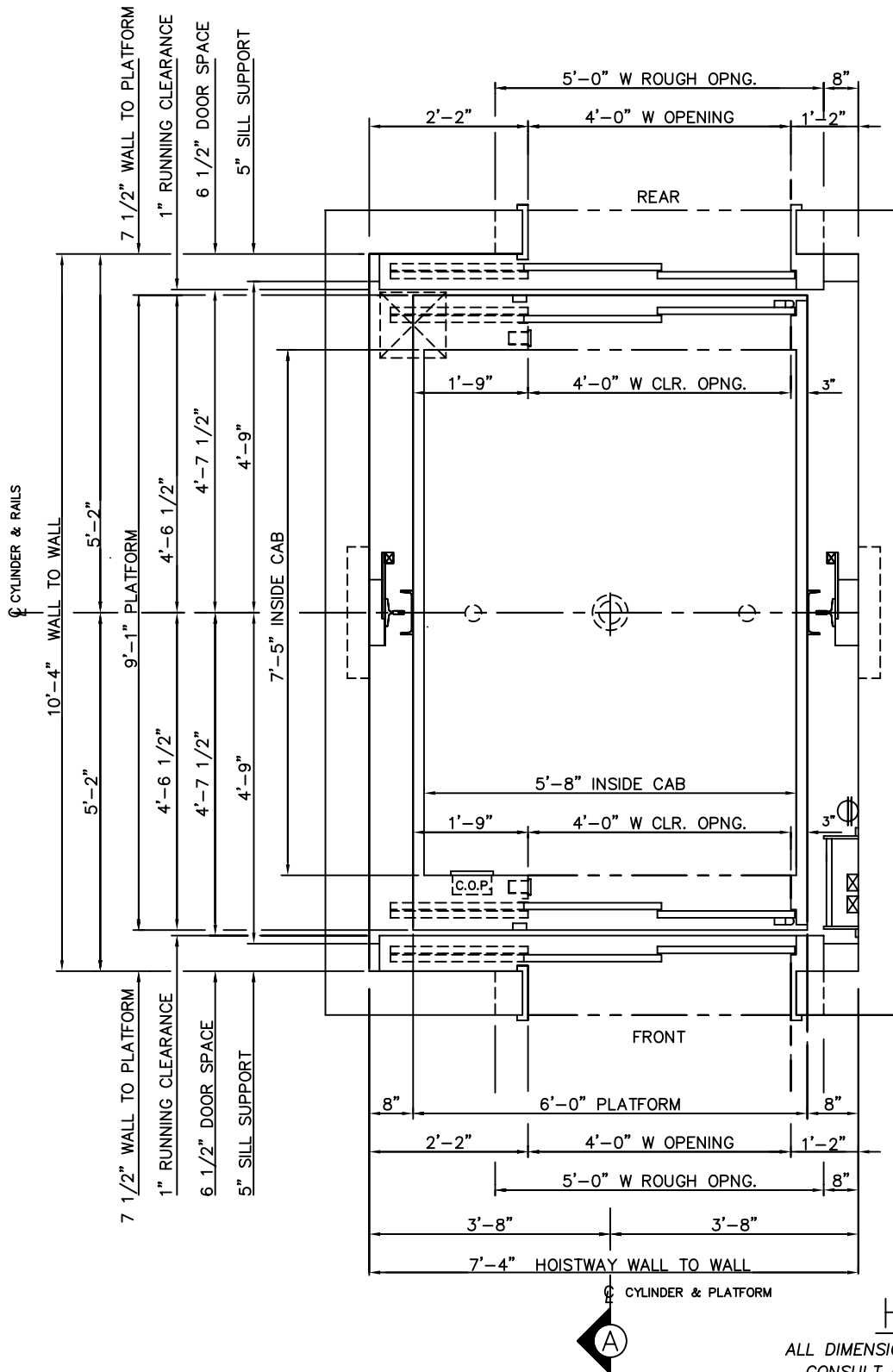


4000 LBS. HOSPITAL INGROUND HYDRAULIC FRONT & REAR RIGHT OPENING



HOISTWAY PLAN

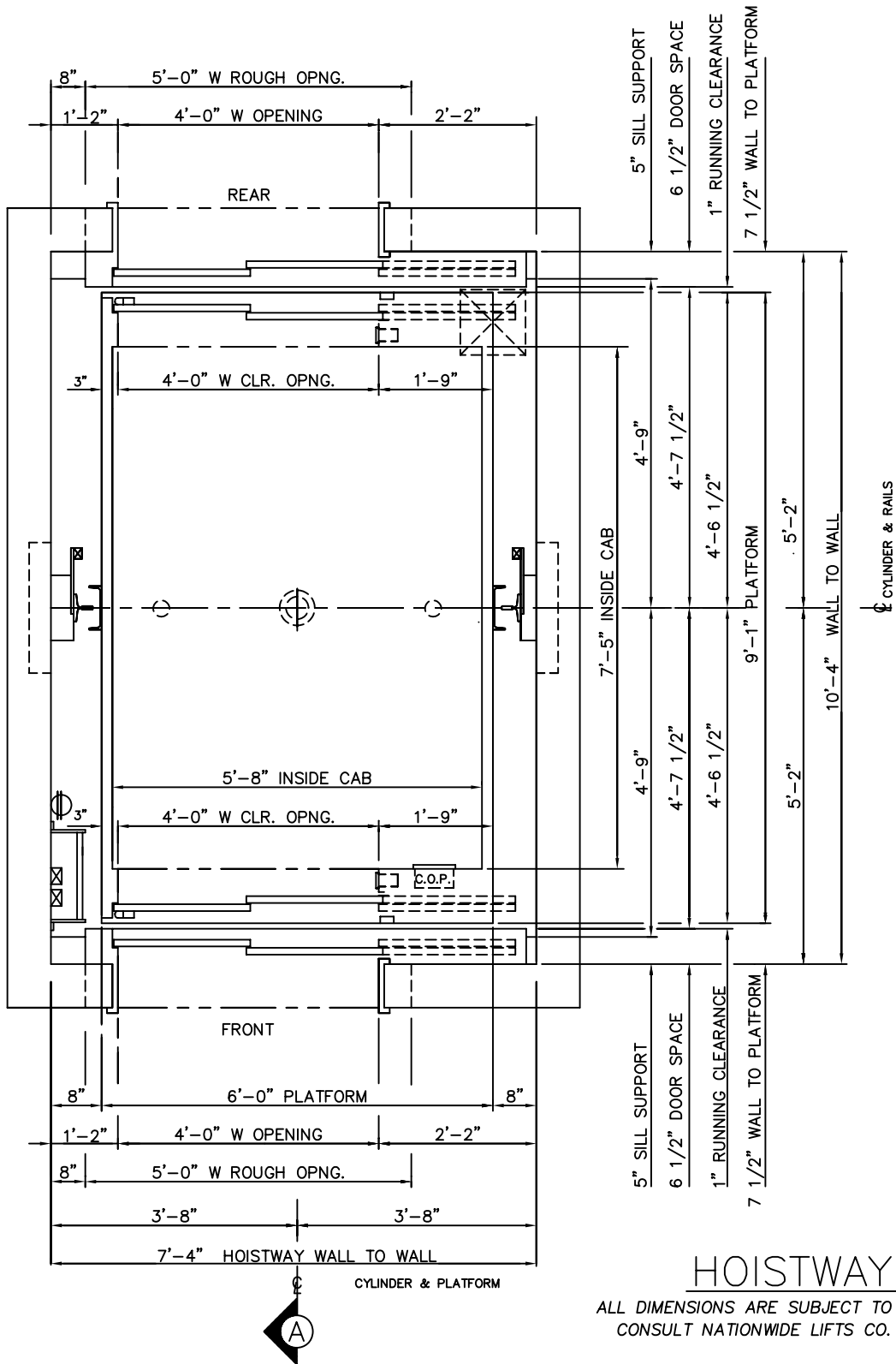
ALL DIMENSIONS ARE SUBJECT TO CHANGE WITHOUT NOTICE.
CONSULT NATIONWIDE LIFTS CO. FOR CONFIRMATION.

MEETS 24" X 84"
STRETCHER REQUIREMENTS



P: 888-695-4387, E: info@elevators.com

4000 LBS. HOSPITAL INGROUND HYDRAULIC FRONT & REAR LEFT OPENING



HOISTWAY PLAN

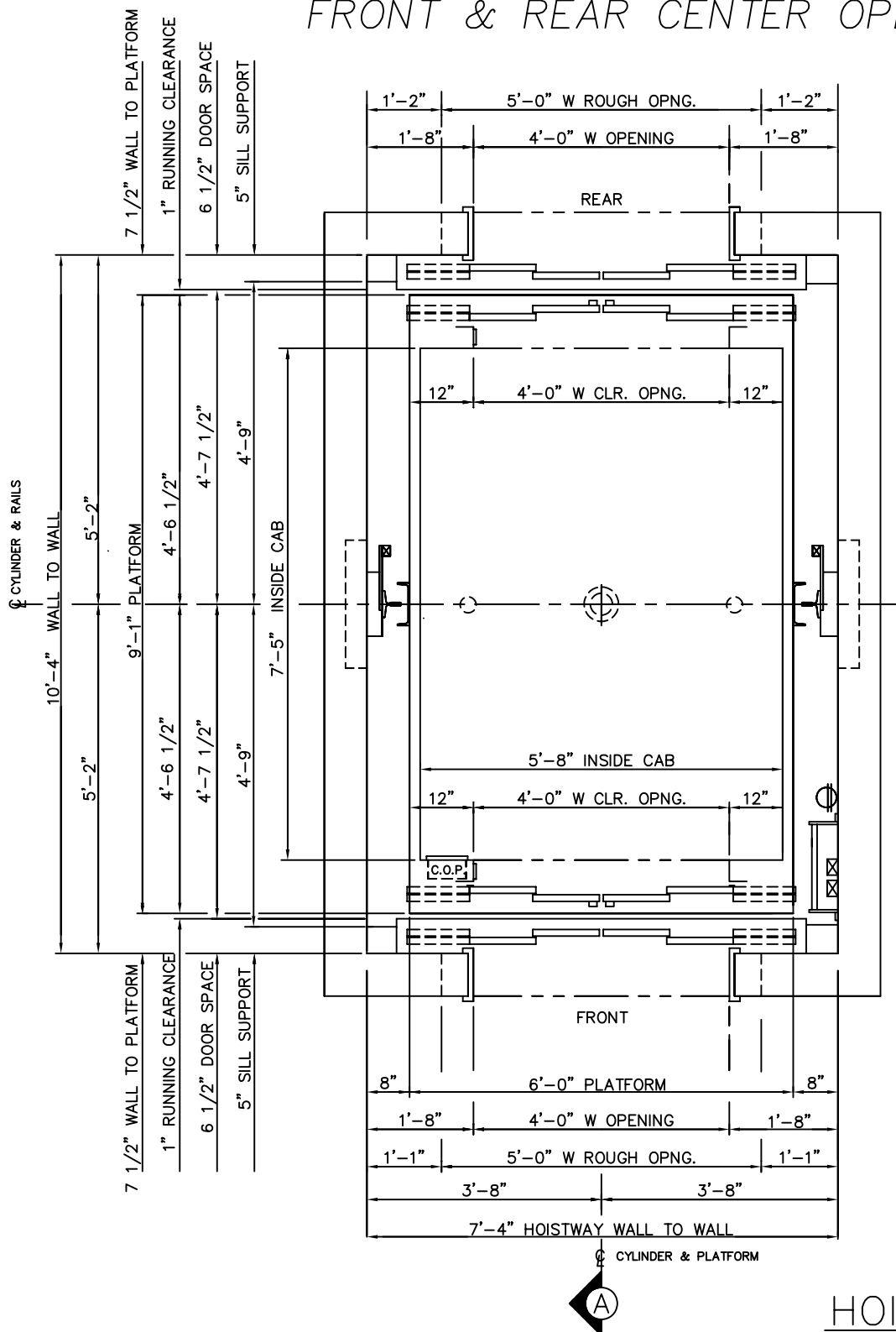
ALL DIMENSIONS ARE SUBJECT TO CHANGE WITHOUT NOTICE.
CONSULT NATIONWIDE LIFTS CO. FOR CONFIRMATION.

MEETS 24" X 84"
STRETCHER REQUIREMENTS



P: 888-695-4387, E: info@elevators.com

4000 LBS. HOSPITAL INGROUND HYDRAULIC FRONT & REAR CENTER OPENING



HOISTWAY PLAN

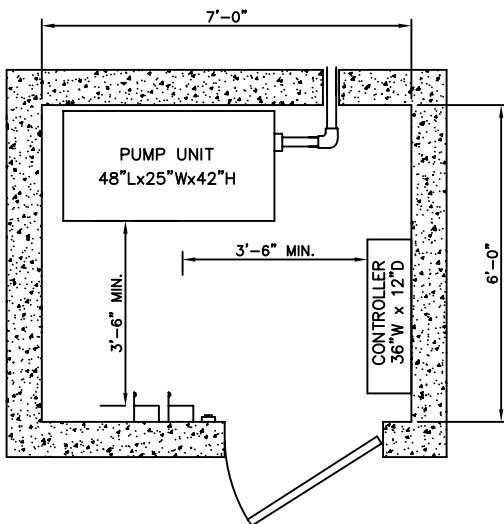
ALL DIMENSIONS ARE SUBJECT TO CHANGE WITHOUT NOTICE.
CONSULT NATIONWIDE LIFTS CO. FOR CONFIRMATION.

MEETS 24" X 84"
STRETCHER REQUIREMENTS

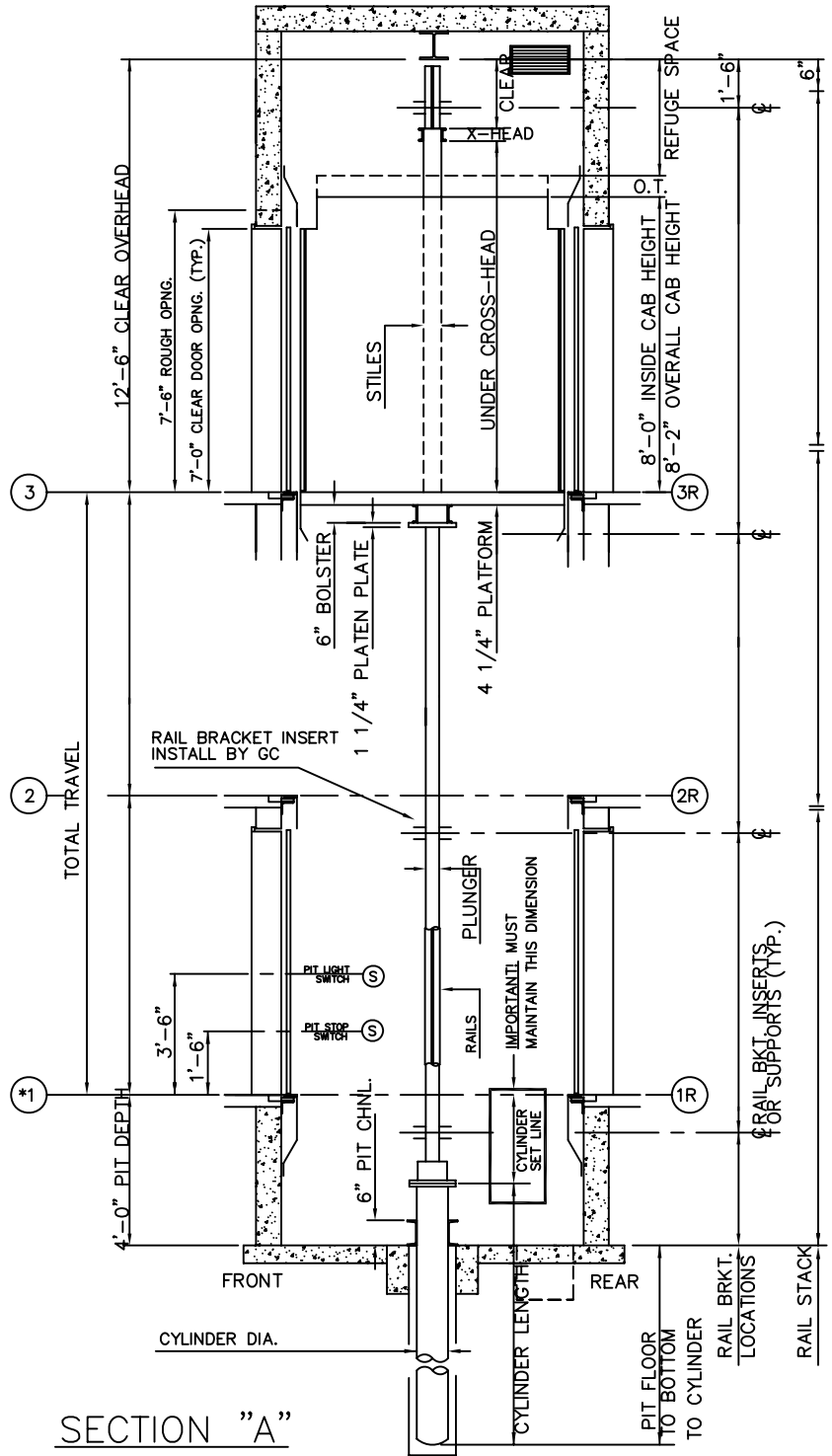


P: 888-695-4387, E: info@elevators.com

4000 LBS. HOSPITAL INGROUND HYDRAULIC FRONT & REAR OPENING



MACHINE ROOM DETAIL



ELEVATION PLAN



P: 888-695-4387, E: info@elevators.com